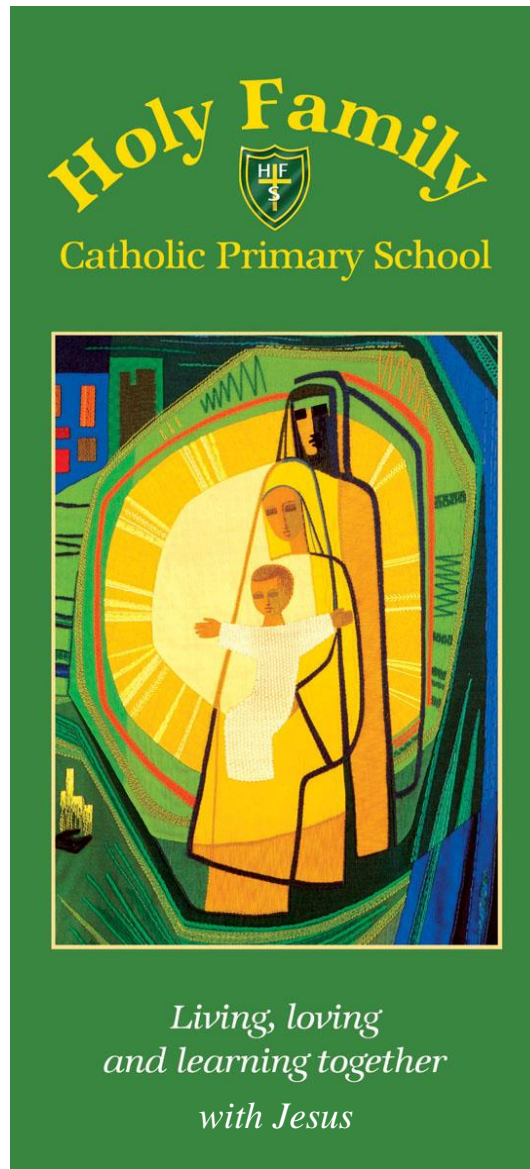


# Holy Family Catholic Primary School

The Rosary Trust



## Anti-Bullying Policy



# Anti-Bullying Policy

## School Mission Statement

*In our Catholic School, with God at the centre of our lives,  
we offer every child a high standard of education, meeting individual needs,  
in a caring and loving community,  
which celebrates our faith.*

*.....Living, Loving, Learning Together with Jesus.....*

Everyone at Holy Family School has the right to feel welcome, secure and happy. Only if this is the case will all members of the school community be able to achieve and learn. Bullying prevents this happening and prevents equality of opportunity. It is everyone's responsibility to prevent bullying and this policy contains guidelines to support this ethos.

Where bullying exists, the victim must feel confident to access the anti-bullying systems within the school to end the bullying. It is our aim to challenge attitudes about bullying behaviour, increase understanding for bullied pupils and build an anti-bullying ethos within the school.

This document outlines how we make this possible at our school.

**Definitions of Bullying** - Holy Family School uses the Anti-Bullying Alliance definition of bullying

The Anti-Bullying Alliance defines bullying as:

*The repetitive, intentional hurting of one person or group by another person or group, where the relationship involves an imbalance of power. It can happen face to face or online.*

There are four key elements to this definition:

- Hurtful.
- Repetition.
- Power imbalance.
- Intentional.

Bullying behaviour can be:

Physical – pushing, poking, kicking, hitting, biting, pinching etc.

Verbal - name calling, sarcasm, spreading rumours, threats, teasing, belittling.

Emotional – isolating others, tormenting, hiding books, threatening gestures, ridicule, humiliation, intimidating, excluding, manipulation and coercion.

Sexual – unwanted physical contact, inappropriate touching, abusive comments, homophobic abuse, exposure to inappropriate films etc.

Online /cyber – posting on social media, sharing photos, sending nasty text messages, social exclusion  
Indirect - Can include the exploitation of individuals.

Holy Family School works hard to ensure that pupils know the difference between bullying and 'falling out' with others. Please see the Holy Family School Child Friendly Anti-Bullying Leaflet.

## Tackling Bullying

We will be vigilant for signs of bullying and take reports of incidents seriously. Bullying can be fuelled by prejudice and we work hard to create a culture where prejudice and hatred is not accepted. Bullying thrives in a culture where name-calling, unwanted touch, rumour mongering and disrespect go unchallenged. At Holy Family School we use the curriculum, assemblies and collective worship times to reinforce the ethos of the school, and help pupils to develop strategies to combat bullying-type behaviour, what is and isn't acceptable.

Pupils are told that they must report any incidence of bullying to an adult within school or at home and that if they see bullying taking place it is their responsibility to report this too.

All reported incidents of bullying will be investigated by a member of staff. A member of staff will be responsible for recording incidents reported to them by pupils and parents and will report them to the Headteacher.

If bullying includes racial abuse, this will be reported to the Headteacher who will record it in the Racial Incident records.

Upon discovery of an incident of bullying, we will discuss it with the children involved in a way that is appropriate to their age and level of understanding. Each of them will be given an opportunity to talk and the discussion will focus on finding a solution to the problem and stopping the bullying recurring. Children who bully others will be told clearly that the behaviour is unacceptable and has consequences. It will also be made clear to all parties that the situation will be monitored and it is their duty to inform us of any further incidents. Bullying can only be dealt with by engendering an open culture.

**Possible Actions** (will always be devised to meet the specified situation)

Pupils will be appropriately supported by a designated member of staff who will meet with them regularly.

Teachers will meet with children and parents to discuss the situation and devise actions to be carried out at home and school.

Education (RE, RSE, PSHE, Assemblies) and school ethos to promote desired behaviours.

Use Holy Family Pastoral Support Assistant to work with individuals/groups to promote desired behaviours.

The school may contact outside agencies to provide support for children if a situation is ongoing.

Consequences for bullying are part of our behaviour policy.

### **Parental Involvement**

We welcome parents informing us of incidents of bullying in school and ask that they emphasise to their children the difference between bullying and day to day disagreements (Bullying=S.T.O.P: **Several Times On Purpose**).

All parties involved in a bullying incident will be informed about it and the action that has taken place. They will be asked to support strategies proposed to tackle the problem.

The school will work with individual families but will also offer families an opportunity to meet in school, together, in a respectful way, if agreed by all parties and it is deemed appropriate.

### **Other connected policies**

Behaviour  
Inclusion  
Safeguarding  
E-Safety  
Child Protection

**Updated:** September 2024