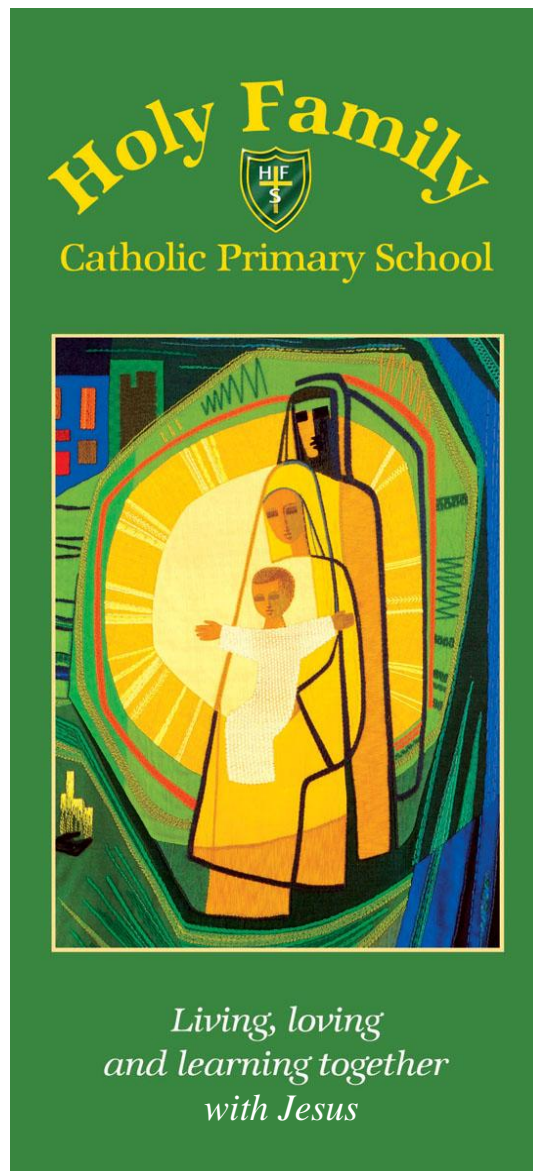


Holy Family Catholic Primary School

The Rosary Trust



Religious Education Policy



Spring 2025

RELIGIOUS EDUCATION POLICY

This Policy has been reviewed and written in line with the School Mission Statement, and with the Diocesan Guidelines and the Curriculum Directory.

Holy Family School Mission Statement

*'In our Catholic School, with God at the centre of our lives,
we offer every child a high standard of education.
We meet individual needs, in a caring and loving community,
which celebrates our faith'.*

.....Living, Loving, Learning, Together with Jesus.....

Our Catholic School is one of the ways by which the children come to know Our Lord, Jesus Christ and know about Him; to proclaim His message; to live in His way and develop their whole person.

Religious Education deepens their knowledge and understanding of Catholicism and develops their appreciation and respect for those with different religious beliefs and practices.

“To provide an education by which their whole lives may be inspired by the Spirit of Christ”.

Our belief in God must not be limited merely to the ‘spiritual’ world or what we do in mass or school collective worship but must permeate all aspects of our lives as responsible global citizens. Catholic Social Teaching is at the heart of all we do. We teach the children about the dignity of the human person, how we are called to live as family and community, about rights and responsibilities, that we are called to stewardship, our responsibility for the poor and vulnerable, about the dignity and rights of workers and about solidarity and the promotion of peace. We do this through RE lessons, assemblies, outside visitors (for example CAFOD), through drama, debate and first-hand experience. As a result, our children feel that they are making a difference to the world by having an impact on social justice.

Our Aim

Religious Education is central to the curriculum of the Catholic school and is at the heart of the philosophy of Catholic education. Religious Education has developed in a way that reflects the particular identity of our Catholic school. It teaches about the Faith in the context of our school which proclaims the Gospel and invites the individual to respond to the message of Christ. As the individual responds to this invitation, growth in Faith and knowledge helps the pupil to respond to the call to holiness and understand the fullness of what it is to be human.

At Holy Family School it is our intent for the Religious Education element of our school curriculum to engage, inspire, challenge and encourage pupils, equipping them with the knowledge and skills to answer challenging questions, explore different religious beliefs, values and traditions and develop a more rigorous understanding of the numerous religious traditions, beliefs and practices that are followed in our multicultural society. We want them to know how religious education promotes discernment and enables pupils to combat prejudice, preparing them for adult life, employment and life-long learning.

How We Do This

At Holy Family School RE lessons are Faith-filled, enjoyable lessons where each child feels they belong to our school community. Children and staff participate in class/whole school worship each day and also attend school Masses. We strive to ensure that the Christian values show themselves not only in the RE lessons but at all times.

We implement the 2012 RECD through 'Come and See' from Years 3-6.

EYFS and KS1 follow the Religious Education Directory (We will implement RED throughout the school from September 2025).

This ensures:

- Opportunities for celebration, prayer and reflection in implicit and explicit ways.
- Children with the language of religious experience - a 'literacy' in religious activities, places, stories, symbols and rituals, people and objects.
- A 'systematic presentation of Christian event, message and way of life' in ways appropriate to the age and stage of development of the child.
- That for its implementation and production it requires the adults involved to understand the underlying theological as well as educational principles.
- Appropriate materials about other faiths.
- Academic respectability as in other curricular areas – utilising appropriate stages from the National Curriculum.

'Come and See' is taught through a series of 9 topics. Other faith traditions are also explored through discreet topics.

The RED is taught through 'Branches'.

A minimum of 10% of teaching time is dedicated to the teaching of RE.

What This Looks Like

We strive to ensure that our children's attainment in RE is in line with, or exceeding their, potential when we consider the varied starting points of children. We measure this carefully using a range of materials but always considering age related expectations. Our aim is to ensure that children will be academically and socially prepared for life in modern Britain and the world. We believe our children have a clear understanding of our core values and our mission as pupils in our school and as they move on in each stage of their life. This will prepare them for life in the wider community, demonstrating tolerance and equality. We measure this not just by the work our children produce but in the behaviours, we see each and every day in all learners. The impact of this intention is seen in the daily interaction of all members of our community, including staff and children.

LINKS BETWEEN HOME, SCHOOL AND PARISH

The vital partnership between home, school and parish provide the context for the lifelong process of spiritual formation.

At Holy Family School we cooperate by bringing our own contribution to the privilege and responsibility of developing the faith and religious commitment of the children. We aim to deliver a balanced, coherent education in the light of Catholic principles, which will enable all

children to develop to their full potential and equip them to contribute to life in a changing society. Above all we strive to lead our children to develop a loving, trusting relationship with God the Father and His Son, Jesus, through the Grace of the Holy Spirit, which we hope will influence their attitude to life and their relationships with others.

- The children attend Mass at the Parish Church at least twice during the school year.
- Mass is celebrated in school regularly or Holy Days (if it falls on a school day).
- Prayer Services are held during Advent and Lent.
- Our charities programme contains links with local, national and overseas organisations.
- A termly newsletter is sent home to each family to inform parents of the themes being studied in school and activities they might wish to undertake to further enhance their child's understanding.
- RE information is available on our school website and on class pages.
- Our Year 6 pupils participate in a Retreat day.

ASSEMBLIES

Assemblies form a very important part of our week

- We meet in the school hall on a Monday morning for the Gospel Assembly. This is led by the Head Teacher.
- Our Assembly on Tuesday is led by the Deputy Head Teacher.
- On Wednesday the assembly is either Class or Teacher led. Parents, Grandparents, Guardians and Carers and younger brothers and sisters are invited to support the Class Assemblies.
- The parish Mass is celebrated in school each Thursday.
- On Fridays we meet at 2:45pm for prayer and celebration.
- Occasionally we have special assemblies led by visitors to the school.
- We have whole school celebration assemblies to share our religious learning on a regular basis.
- Our Chaplaincy Team meets regularly to plan assemblies and share prayers with the whole school.

WE CELEBRATE EXCELLENCE BY:

- Giving praise for effort.
- Displaying children's work.
- Having a Merit Assembly where children are commended for work or attitude.

STRATEGIES FOR ENSURING PROGRESSION AND CONTINUITY

Planning in RE is a process in which all teachers are involved, wherein:

- There are regular staff meetings to discuss forthcoming topics in order to ensure consistency of approach and expectations and also to support colleagues.
- Teachers use the RED or Come and See scheme to plan for lessons ensuring that they have scripture content.

THE ROLE OF THE RE CO-ORDINATOR IS TO:

- Take the lead in Policy development.
- Provide written and verbal feedback to staff through moderation, lesson observations and book scrutinies.
- Provide relevant reflection and planning for the school annual development plan.
- Support colleagues in the implementation of “Come and See” and the RED.
- Devise and advise staff on assessment and record keeping activities.
- Monitor progress in R.E. and advise the Head Teacher on any action needed.
- Take responsibility for the purchase, organisation and inventory of resources for R.E.
- Keep abreast of developments in R.E. and disseminate information to colleagues as appropriate.
- Earmark staff meetings in advance on the termly list circulated by the Head Teacher.
- To ensure that cross curricular links are made wherever possible.
- To produce central displays relevant to the current Liturgical feast.

FEEDBACK TO PUPILS

Feedback about pupils’ progress in R.E. is achieved by discussion and the marking of work. Effective marking in R.E., as with any other subject:

- Aims to be encouraging and supportive.
- Is often done while a task is under way through discussion between the pupil and teacher and by verbal feedback from the teacher at that time.
- Is undertaken in accordance with our Marking Policy.
- Peer assessment is encouraged to support Talk Partner learning and to embed new learning opportunities.

ASSESSMENT

At Holy Family School we believe that the development of a child’s Faith is unique and cannot be assessed. However, we can assess the religious knowledge delivered through the “Come and See” programme and the RED.

We hope to meet the pupils’ needs where they are on their Faith journey. We do this by:

- Helping them to see and meet the challenges of the Gospel.
- Nurturing and developing an already existing Faith.
- Acquiring knowledge and understanding of beliefs, practices and religious traditions.

Assessment is used to guide the progress of individual pupils in R.E. It involves the identification of each child’s progress in each aspect of the subject – determining what each child has learned. This informs future planning for the next stage of his/her learning. Assessment identifies what children know, understand, and can do. In assessing knowledge in RE, we are testing the children’s understanding of facts and their use of skills. More importantly we are assessing the growing understanding of a concept. Assessment is undertaken in two ways: informally by teachers in the course of their teaching; and by the use of self-assessment by pupils.

At the end of each ‘Come and See’ topic, teachers record their judgements on an assessment grid linked to the key assessment descriptors relating to the ‘Come and See’ scheme.

At the end of each 'Branch' in the RED, teachers record their judgements on an assessment grid linked to the RED outcomes.

In line with other core curriculum subjects, the RE Co-ordinator will be responsible for using this data to assess, track and monitor attainment and progress each term.

REPORTING TO PARENTS

Reporting is done during consultation evenings in the Autumn and Spring Terms and annually through a written report. Reporting in R.E. focuses on each child's:

- Attitude to Religious Education.
- Attitudes to self, others in school and in the wider world.
- Topics /Themes covered.

STRATEGIES FOR THE USE OF RESOURCES

Central resources are the responsibility of the R.E. Co-ordinator. They include:

- Mass vessels.
- Crib figures.
- A wide selection of books in the Library on Religious Education in the Resource Room opposite Y6 (including a Class set of Bibles), Multi-cultural and PSHE resources are also centrally stored here.
- Other resources likely to be used by all classes occasionally – posters, statues, rosary beads etc.
- Brentwood Diocese information.

Classroom resources include:

RED for each class.

Prayer and Liturgy directory for each class.

"Come and See" teacher's books relevant to the year group.

"Come and See" teacher resources.

Crucifix/Cross.

Candle.

Liturgical music linked to "Come and See".

RE display area in each classroom that reflects the current topic.

Class Liturgical box containing materials (reflecting the liturgical year colours) and artefacts to enhance RE themes and display.

Presented to Governors: Spring 2025

Reviewed: Spring 2025

Next review: Reviewed Spring 2026